



निर्यात के लिए नहीं NOT FOR EXPORT

OPEN SERIES
MAP

No. E44A13

Scale 1:50,000

| | | |
|--|---|---|
| F44S12 (55U12) | F44S16 (55U16) | F44T4 (55P4) |
| E44A9 (56U13) | Yavatmali MAHARASHTRA E44A13 (56U13) | E44B1 (56U11) |
| 1 Adilabad ANDHRA PRADESH E44A10 (56U10) | E44A14 (56U14) | Chandrapur MAHARASHTRA E44B2 (56U12) |

भारतीय सर्वेक्षण विभाग

SURVEY OF INDIA

1st Edition 2010.

Price : Rs. 50/-

CONVENTIONAL SYMBOLS

| | |
|--|--|
| Express highway, with toll, with bridge, with distance stone | |
| Roads, metalled, according to importance | |
| Roads, double carriageway, according to importance | |
| Unmetalled road, Cart-track, Pack-track with pass, Foot-path | |
| Streams, with track in bed, undefined, Canal | |
| Dams, masonry or rock-filled, earthenwork, Weir | |
| River, dry with water channel, with island & rocks, Tidal river | |
| Submerged rocks, Shoal, Spilling, Reef | |
| Wells, lined, unlined, Tubo-well, Spring, Tanks, perennial, dry | |
| Embankments, road or rail, tank, broken ground | |
| Railways, broad gauge, double, single with distance stone, do. | |
| Mineral line or tramway, Kin, Cutting with tunnel | |
| Contours with sub-features, Rocky slopes, Cliffs | |
| Sand features (1) Flat, (2) Sand-hill, (3) Dunes, (4) Shifting | |
| Towns or Villages, inhabited, deserted, Fort | |
| Hulk, permanent, temporary, Tower, Antiquities | |
| Temple, Chhat, Church, Mosque, Idgah, Tomb, Graves | |
| Lighthouse, Lightship, Buoy, lighted, unlighted, Anchorage | |
| Mine, Vine on trellis, Grass, Scrub | |
| Palms, palms, other, Plantain, Conifer, Bamboo, Other trees | |
| Areas: cultivated, wooded, Surveyed tree | |
| Boundary, international | |
| state, demarcated, undemarcated | |
| district, subdivision, tahsil or block, tehsil | |
| Boundary pillars: surveyed, uncalculated | |
| Heights, triangulated station, point, approximate | |
| Bench-mark: geodetic, levelling, canal | |
| Post office, Telegraph office, Overhead tank | |
| Rest house or inspection bungalow, Circuit house, Police station | |
| Camping ground, Forest: reserved, protected | |
| Spaced names: administrative, locality or tribal | |
| Hospital, Dispensary, Veterinary, Hospital / Dispensary | |
| Aerodrome, Helipad, Tourist site | |
| Power line, with pylons surveyed, with poles unsurveyed | |

NOTES :-

Heights are in metres and above Indian mean sea level.
Contours are approximate.
In Marathi names the letter 'd' has frequently the sound of 'r' and 'v' invariably that of 'w', when an initial letter and of 'o' when otherwise placed.
Cart-track, in this sheet, are generally passable in dry season.
Tanks, shown dry, in this area usually contain water from July to December.
The triangulated heights and contours in this sheet have not been adjusted to the heights of the spirit-levelled bench-marks, and may not be strictly in accordance with them.
The state boundary between Andhra Pradesh and Maharashtra States has been surveyed as pointed out by the local official on the ground but has not been verified by the Government of Andhra Pradesh.
A relative height, 'R' represents the approximate height in metres, between the top and bottom of a steep slope.

COMPILED INDEX

| |
|---|
| A. Surveyed during 1978-79. Updated for major details during 2006-07. |
|---|

Projection - UTM Datum - WGS 84

Magnetic Variation from True North about 1° West in 2005.

(Decreasing by about 1° annually).

1:50,000



For further details about this map, please contact

Director

Maharashtra & Goa Geo-Spatial Data Centre

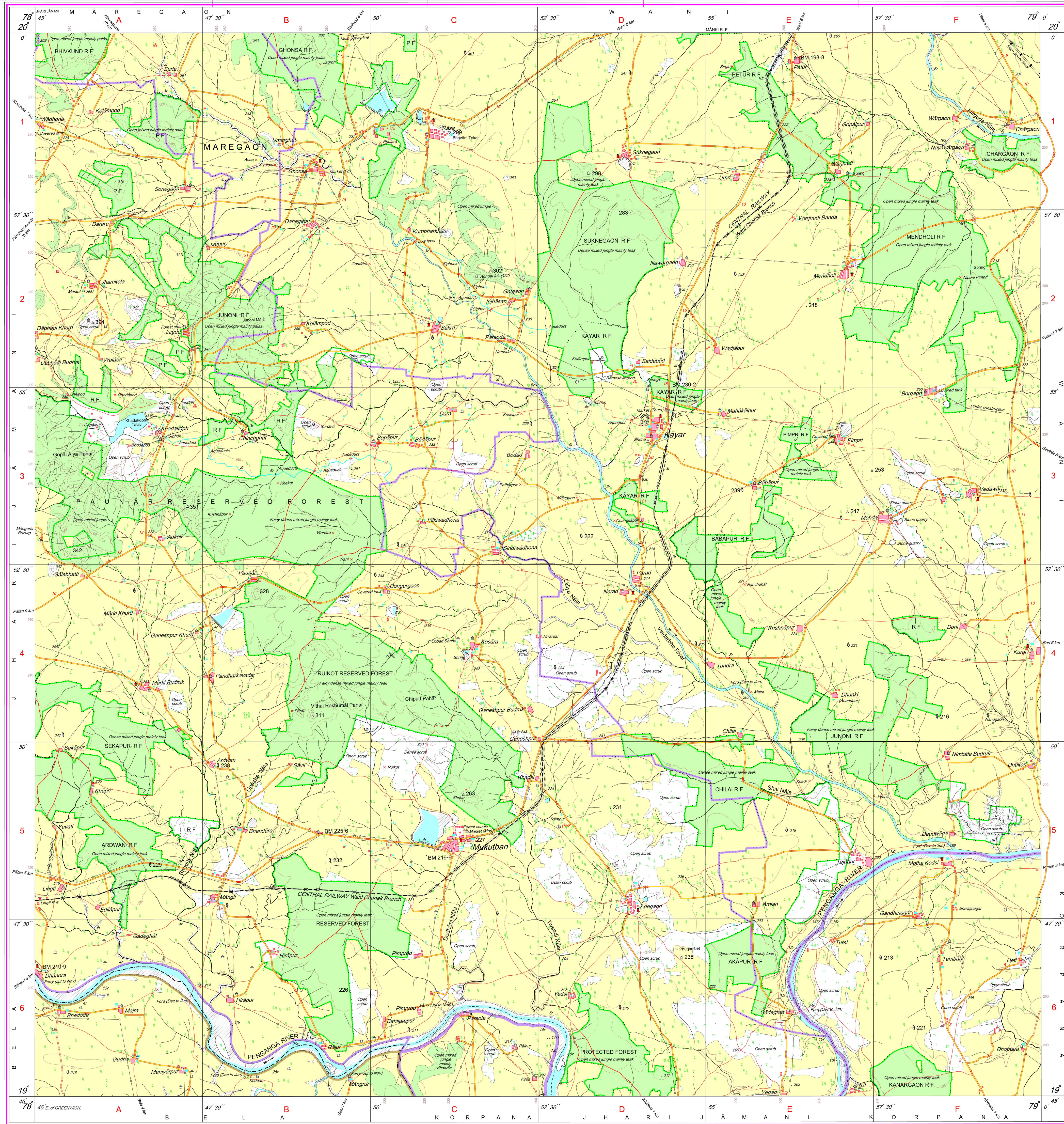
Survey of India, Phule Nagar, Alandi Road

Pune.

WEBSITE - www.surveyofindia.gov.in

Reproduction in whole or part by any means is prohibited without the written permission of Survey of India, the National Mapping Agency.

GOVERNMENT OF INDIA COPYRIGHT, 2010.



REG. No. - SPG D/10 (Maharashtra & Goa GDC-1:50,000)

भारत के मासिक नक्शे के निर्माण में प्रयुक्त,
Published under the direction of Surveyor General of India,
Survey of India, Hattibhaskar Estate, Post Box No. 37, Dehra Dun - 248001 (Uttarakhand),
Department of Science & Technology, Government of India.

PRINTED AT THE SOUTHERN PRINTING GROUP OF SURVEY OF INDIA.